

Fat Hat Clothing Co.'s Amazing Winter Sale 2021!!!

February 8th thru March 31st
50% off all listed prices!!!

Cotton Down

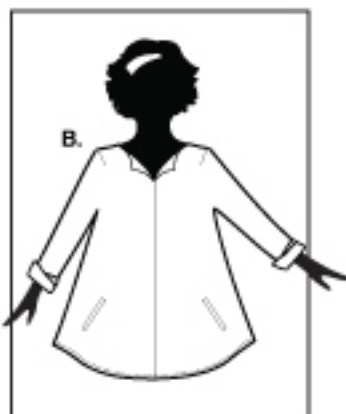
Available in 11 beautiful colors: Blue Grass, Cherry, Citron, Cobalt, Cyan, Dark Teal, Inky Blue, Frosty Grape, Spitfire, Cream and Black. Machine wash cool, lay flat to dry. S, M, L, XL

VERY LIMITED AVAILABILITY ON ALL COTTON DOWN

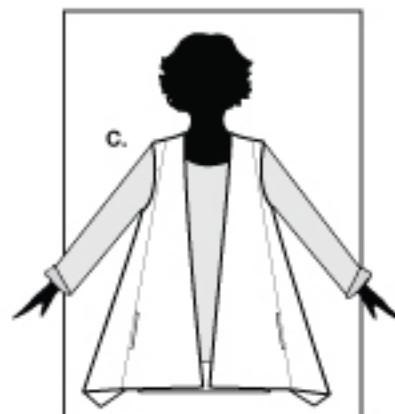
****NOTE: NO CHERRY, DARK TEAL, BLACK OR CREAM IN THE SASSY COWL, ZIPPY JACKET OR BOXY TURTLES****



A. SOPHISTICATED
SWIRL
CD20-SW.....\$145
With a great stand up
collar!



B. DAY INTO NIGHT
CD20-DN.....\$138
Very stylish with an
open neckline.



C. VAGUELY VOGUE
VEST
CD20-VV.....\$130
Looks great over
everything!

PLEASE NOTE: If you would like to come shop in the store you need to call first and make an appointment. Thank you!

**NO RETURNS,
ALL SALES FINAL!!!**

(802) 296-6646

Cotton Down cont'd

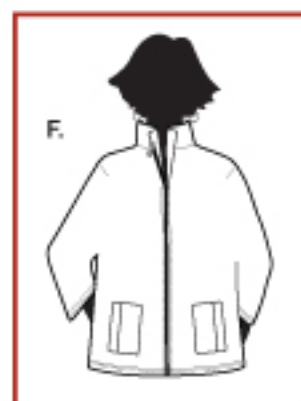
****NOTE: NO CHERRY, DARK TEAL, BLACK OR CREAM IN THE SASSY COWL, ZIPPY JACKET OR BOXY TURTLES****



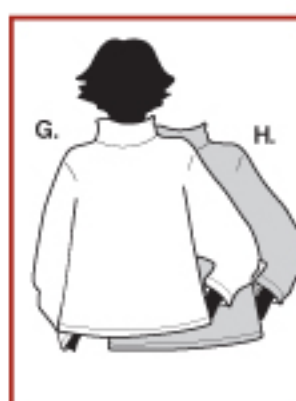
D. BUTTON TEE
CD20-BT.....\$126
It has a bateau styled neck,
an a-line shaped body with
a soft curved hemline.



E. SASSY COWL **
CD20-SC.....\$146
IT'S THE ONE AND ONLY
...SASSY COWL...



F. ZIPPY JACKET**
CD20-ZJ.....\$103
A regular in the Cotton
Down line-up each year!
ONE SIZE.



G. BOXY TURTLE**
CD20-BX.....\$86
Our favorite top of all time is a loose,
boxy, loose coveled turtle neck.
TWO SIZES ONLY: size one (s/m)
and size two (m/l).

H. BOXY TURTLE 2" **
LONGER
CD20-BX2.....\$88
Same as the regular
Boxy Turtle but 2"
longer.
(TWO SIZES ONLY:
size one (s/m)
and size two (m/l).

February 8th thru March 31st 50% off all listed prices!!!

Vaguely Vogue

This lightweight, slightly dressy fabric from the Netherlands is stone-washed in 90% viscose, 10% poly giving it an incredibly delicious, sueded hand. The garments can be machine washed in a cool wash, hung to dry, iron low heat or dry clean. xs-1X

LIMITED AVAILABILITY ON ALL STYLES AND COLORS.

SWATCHES:



White



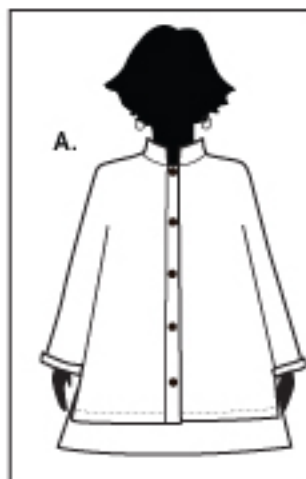
Sueded Black



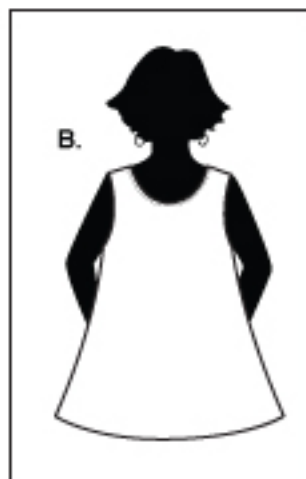
Misty Morning



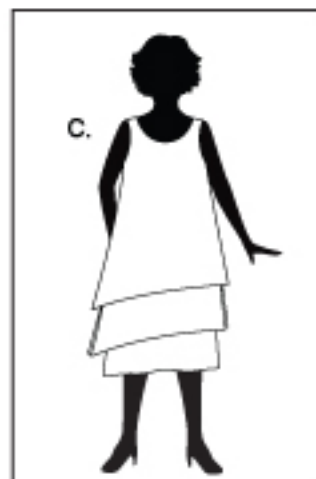
Sandstorm



A. PULLMAN JACKET
VV20-PJ.....\$158
Love at first try!



B. SUMMER SHELL
VV20-SH.....\$104
A perfect sleeveless top.

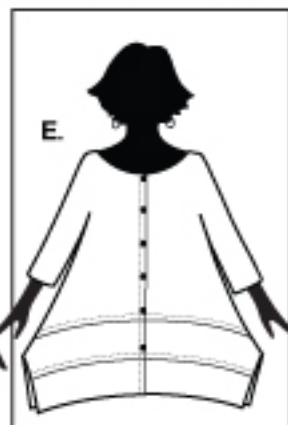


C. GARDEN PARTY DRESS
VV20-GP....\$198
Weddings, garden parties,
an evening out...this
could be YOUR dress.

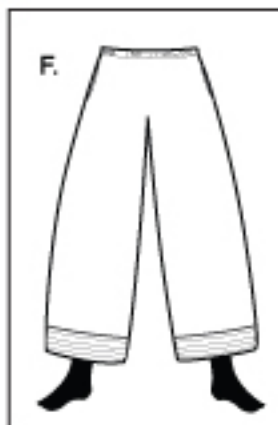
NO RETURNS, ALL SALES FINAL!!!



D. SUMMER BLAZER
VV20-SB.....\$178
The collar stands up
boldly and with great
pizzazz.



E. DRESSED TO A TEE
VV20-DT.....\$178
Funky, Flattering, Fun
and Fabulous.



F. GALLOPING GAUCHO
VV20-GG.....\$172
A comfy, 33 1/2" (o.s)
pull-on pant.



G. CUFFED CROP
VV20-CC.....\$138
This 35 1/2" (o.s) pant
is a beautiful pant!

**NO RETURNS,
ALL SALES FINAL!!!**

**PLEASE NOTE: If you would like to come shop
in the store you need to call first and make an
appointment. Thank you!**

Fat Hat Clothing Co.'s amazing Winter Sale!

February 8th thru March 31st 50% off all listed prices!!!

Summer Nights

This bi-stretch dotted jacquard comes to us from Turkey in Available in Black and Soft Sage with Black Dots. 69% Cotton, 28% Poly, 3% Spandex. Cold water wash, hang to dry. XS, S, M, L, XL, 1X

LIMITED AVAILABILITY ON ALL STYLES AND COLORS.

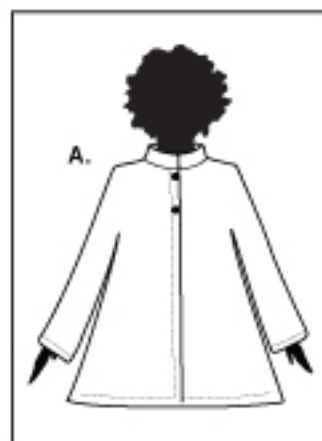
SWATCHES:



Black

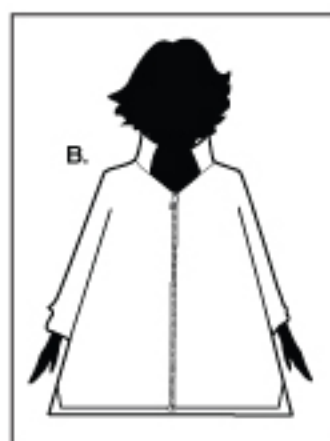


Sage w/ Black Dots



A. PULLMAN JACKET
SN20-PJ....\$142

It can be dressed up or down over a cotton tee shirt.



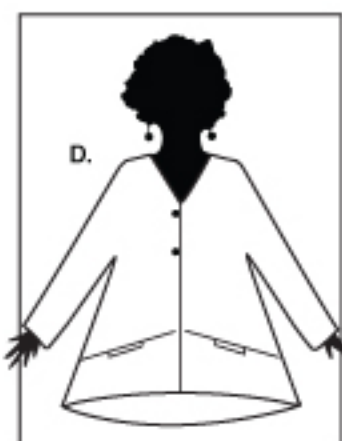
B. UPTOWN CROP JACKET
SN20-UT.....\$142

It closes with a 19" black zipper up the front.



C. CITY VEST
SN20-CV.....\$144

Long and lean with a high collar for pizzazz!



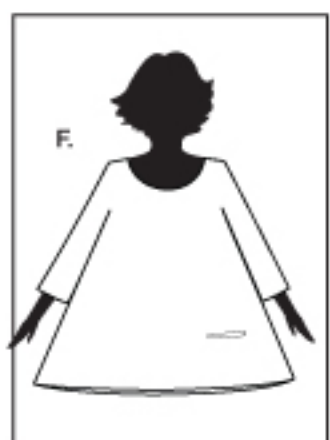
D. TRAVELIN' JACKET
SN20-TJ.....\$147

A great looking vee neck jacket with a reverse, slightly vee-ed front hemline.



E. LILY LISBON DRESS
SN20-LL.....\$164

It's always fun to have one very hip summer dress!



F. TMF
(Too Much Fun top)
SN20-TMF.....\$138

an arty-styled, pullover with a BIG a-lined shape body.



G. 3 Button Shell
SN20-TB....\$89

It's a store favorite because it looks so good and fits so well.



H. FOREVER PANT
SN20-FP.....\$142

Just wait til you try it on!! (35" outseam).

In addition: 30% - 50% off almost everything at the Fat Hat Store!

(802) 296-6646

p.4

February 8th thru March 31st 50% off all listed prices!!!

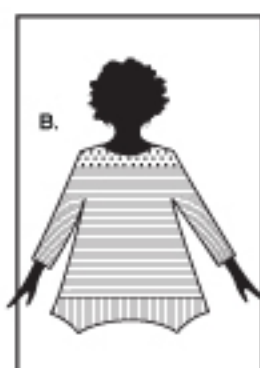
Travelknit Spring/Summer

No matter where you travel or when you get there, this collection is perfect for the trip. It also likes to stay home...on the ready...for day or nighttime casual wear. 92% Rayon 8% Spandex, machine wash cool separately, cool dry cycle or lay flat to dry. Pebble Solid, Pebble/Sand Stripe, Pebble/Sand Dot, Sky Solid, Sky/White Stripe, Sky/White Dot, Black/White Dot, Black/White Stripe, Black and White. Available in combinations ONLY as described below. xs, s, m, l, xl

LIMITED AVAILABILITY ON ALL STYLES AND COLORS.



A. BOAT NECK TEE
TKS20-BN.....\$98
A simple & elegant tee.
DOTS, STRIPES AND
SOLIDS.



B. DOWNTOWN TEE
TKS20-DT.....\$112
We love this stunning
tee. MIXED AND
MATCHED AS
SHOWN OR SOLID.



**C. SWINGIN' SCOOP-
NECK**
TKS20-SS.....\$106
A scooped neck with
a ¾ length sleeve & a
slim body fit. DOTS,
STRIPES & SOLIDS.



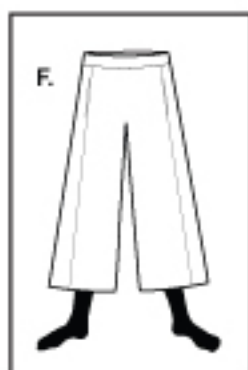
D. SPIRAL DRESS
TKS20-SP.....\$128
A charming sleeveless
dress. MIXED AND
MATCHED AS SHOWN.

**NO RETURNS,
ALL SALES FINAL!!!**

**Fat Hat Clothing Co.'s
Amazing Winter Sale!!!**



E. LILY LISBON DRESS
TKS20-LL.....\$164
Light weight, flowy
and fun!
DOTS AND SOLIDS.



F. PALAZZO PANT
TKS20-PL.....\$118
It's hard to beat
stylish AND comfy!
SOLID ONLY.



G. CAP SLEEVE TEE
TKS20-CS.....\$88
A basic tee that should
be hanging in every
closet. DOTS, STRIPES
AND SOLIDS. NO
WHITE OR BLACK
AVAILABLE.



H. TUNIC TANK
TKS20-TU.....\$88
A regular in our spring
and summer line up.
DOTS, STRIPES AND
SOLIDS.



**I. SASSY
SPANTALOON**
TKS20-SSN.....\$116
A flirty version of
the Spantaloons!
PEBBLE DOT ONLY.

**PLEASE NOTE: If you would like to come shop in the store you need to call first
and make an appointment. Thank you!**

(802) 296-6646

p.5

Fat Hat Clothing Co.'s amazing Winter Sale!

February 8th thru March 31st:

30% - 50% off almost everything at the Fat Hat Store!

Travelknit Fall/Winter

This wonderful 92%rayon 8% spandex "made in the usa...on purpose" fabric is never out of season. It packs easily, wears well, is light enough for spring/summer and warm enough for the rest of the year. Customers love it and anxiously wait to see what's next. Available in new colors: STRIPES: Plum/Black, Dusk/Navy, Moss/Pine... SOLIDS: Black, Plum, Navy, Pine. Machine wash cool, dry cool or hang to dry. S,M,L,XL

LIMITED AVAILABILITY ON ALL STYLES AND COLORS.



Plum/Black



Plum



Dusk/Navy



Navy



Moss/Pine

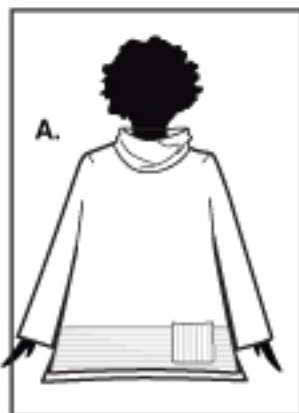


Pine



Black

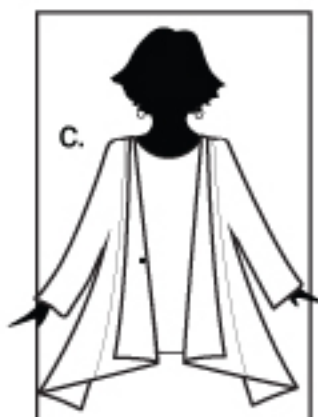
PLEASE NOTE:
If you would like to come shop in the store you need to call first and make an appointment. Thank you!



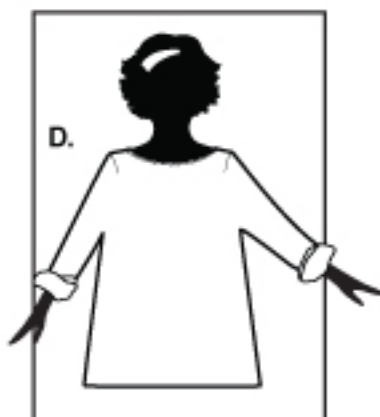
A. BANDED TURTLENECK
TKF19-BA.....\$111
A loose turtleneck with wide-striped bottom band. SOLID WITH STRIPED BAND. PLUM & PINE ONLY.



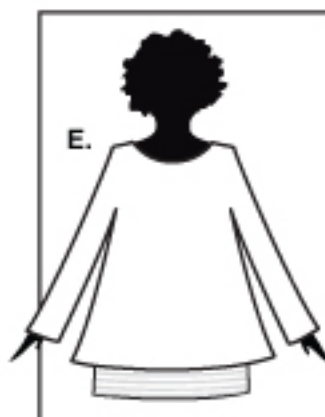
B. CHEVRON LONG-SLEEVED TEE
TKF19-CL.....\$113
Simple but sophisticated. SOLID BODY WITH STRIPES, OR STRIPED BODY WITH SOLID.



C. VAGUELY VOGUE CARDY
TKF19-VV.....\$144
V cross-over closure and pockets to boot! BLACK SOLID ONLY & STRIPES.



D. BASICLY A TEE
TKF19-BT.....\$109
A perfectly flattering tee shirt. SOLID ONLY, NO STRIPES.



E. DOUBLE OR NOTHING
TKF19-DN.....\$143
A slim fitting inner layer within a long sleeved top. STRIPE OR SOLID BODY WITH CONTRASTING UNDERPIECE.

**NO RETURNS,
ALL SALES FINAL!!!**

Travelknit Fall/Winter cont'd

LIMITED AVAILABILITY ON ALL STYLES AND COLORS.



Plum/Black



Plum



Dusk/Navy



Navy



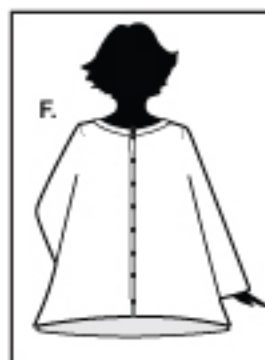
Moss/Pine



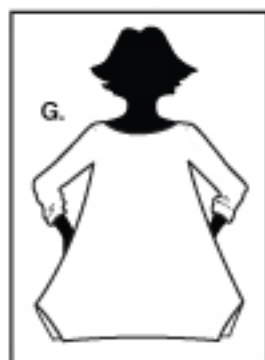
Pine



Black



F. EVERYDAY CARDY
 TKF19-EC.....\$117
 A basic cardy that is basically perfect!
 SOLID OR STRIPE.



G. DRESSED UP TEE
 TKF19-DU.....\$120
 Graceful and elegant.
 SOLID OR STRIPE.



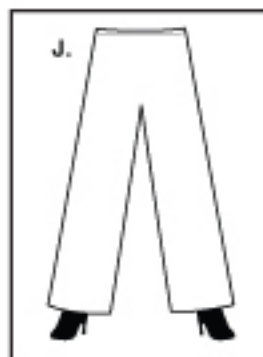
H. SPANTALOO
 TKB19-SN.....\$110
 Our "famous" all-in-one skirt/legging combo.
 BLACK OR NAVY LEGS ONLY.



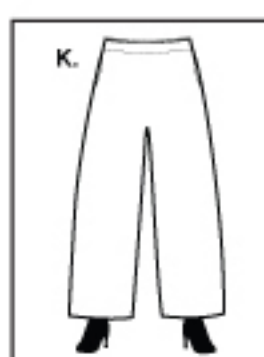
I. SASSY SPANTALOO
 TKF19-SSN.....\$114
 A flirty version of the Spantaloon!
 BLACK OR NAVY LEGS ONLY.

Very limited availability on H. & I.

**NO RETURNS,
 ALL SALES FINAL!!!**



J. STOVEPIPE PANT
 TKF19-SP.....\$104
 They have a narrow waist elastic, narrow at the high hip and slightly flared at the hemline.
 BLACK ONLY.



K. EASY PANT
 TKF19-EP.....\$122
 Very comfy and stylish with two in-seam side pockets. SOLIDS ONLY.

PLEASE NOTE: If you would like to come shop in the store you need to call first and make an appointment. Thank you!